



MP 79, MP 79T Stainless Steel Square Beam Load Cell



227 kg ... 5,099 kg

- Full stainless steel construction
- Compatible with other sources
- Hermetically welded seal (IP68, IP69K)
- Matched output
- Approved according to OIML R60
- Ex version available

Applications

- Platform scales
- Tank and hopper scales

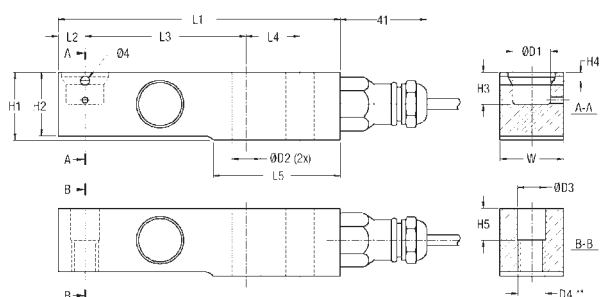
Technical Data		C3MR	
Accuracy class (Combined error)		0.020	% C _n
Maximum capacity	E _{max}	227 454 1,134 2,268 5,099	kg
Maximum usable load	E _u	200	% E _{max}
Destructive load	E _d	≥ 300	% E _{max}
Safe side load	E _{lq}	100	% E _{max}
Maximum number of LC intervals	n _{LC}	3,000	
Minimum LC verification interval v _{min} = E _{max} Y	Y	11,500 11,000 (E _{max} = 5,099 kg)	
Rated output	C _n	2.0	mV/V
Tolerance on rated output	D _c	≤ ± 0.1	% C _n
Zero output signal	S _{min}	≤ ± 5.0	% C _n
Creep. during 30 min.	d _{cr}	≤ ± 0.0166	% C _n
Temperature effect on S _{min}	TK _{Smin}	≤ ± 0.0122 ≤ ± 0.0127 (E _{max} = 5,099 kg)	% C _n / 10 K
Temperature effect on C	TK _C	≤ ± 0.010	% C _n / 10 K
Input impedance	R _{LC}	1,100 ± 50	Ω
Output impedance	R ₀	1,000 ± 2	Ω
Insulation impedance (100 V DC)	R _{IS}	≥ 5	GΩ
Recommended supply voltage	B _u	5 ... 15	V
Nominal ambient temperature range	B _f	-10 ... +40	°C
Usable ambient temperature range	B _{tu}	-40 ... +80	°C

Technical Data

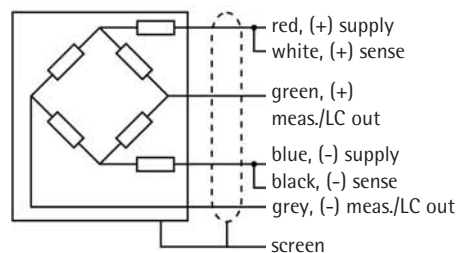
C3MR

Nominal deflection	S_{nom}	0.21 ($E_{max} = 227 \text{ kg}$); 0.24 ($E_{max} = 454 \text{ kg}$); 0.32 ($E_{max} = 1,134 \text{ kg}$); 0.47 ($E_{max} = 2,268 \text{ kg}$); 0.52 ($E_{max} = 5,099 \text{ kg}$)	mm
Cable length		5.0	
Cable type		6 conductor TPE cable (AWG 26) shield grounded	
Sensor material		Stainless Steel 17-4PH (1.4548)	
Protection class (acc. to IEC 529 resp. DIN 40050)		IP68, IP69K	

The technical data given here serve only as a product description and must not be interpreted as guaranteed characteristics in legal sense.



Capacity	L1	L2	L3	L4	L5	H1	H2	H3	H4	H5	W	D1	D2	D3	D4
227 kg; 454 kg	133.4	12.7	76.2	25.4	59.9	31.0	28.8	15.0	4.0	15.0	30.0	18.0	13.0	13.5	M12
1,134 kg; 2,268 kg	133.4	12.7	76.2	25.4	59.9	31.0	30.5	15.0	4.0	15.0	30.0	18.0	13.0	13.5	M12
5,099 kg	190.0	21.0	105	40.0	93.0	49.0	41.0	20.5	8.0	20.5	43.0	25.0	21.0	21.5	M20



Dimensions in mm

Wiring diagram

Order information

Type	Order number	Type	Order number
MP 79/227kgC3MR	9408 279 07120	MP 79T/227kgC3MR	9408 279 17120
MP 79/454kgC3MR	9408 279 07150	MP 79T/454kgC3MR	9408 279 17150
MP 79/1,134kgC3MR	9408 279 07210	MP 79T/1,134kgC3MR	9408 279 17210
MP 79/2,268kgC3MR	9408 279 07220	MP 79T/2,268kgC3MR	9408 279 17220
MP 79/5,099kgC3MR	9408 279 07250	MP 79T/5,099kgC3MR	9408 279 17250
MP 79/227kgC3MRE	9408 679 07120	MP 79T/227kgC3MRE	9408 679 17120
MP 79/454kgC3MRE	9408 679 07150	MP 79T/454kgC3MRE	9408 679 17150
MP 79/1,134kgC3MRE	9408 679 07210	MP 79T/1,134kgC3MRE	9408 679 17210
MP 79/2,268kgC3MRE	9408 679 07220	MP 79T/2,268kgC3MRE	9408 679 17220
MP 79/5,099kgC3MRE	9408 679 07250	MP 79T/5,099kgC3MRE	9408 679 17250

Certificate of conformity

MP 79(T) (optional)

Ex-Zone 2, 22
II 3G Ex nA II T6
II 3D Ex tD A22 IP65 T85°C

MP 79(T)/.E

Ex-Zone 0, 1, 20, 21
II 1G Ex ia IIC T6|T5 Ga
II 1D Ex ia IIIC IP67 T100°C Da



Accessories

MP 80 | MP 90 – Cables and cable junction boxes

MP80 Installation cable

- Temperature range: -40°C ... +90°C
- Material: TPE
- 6-wire cable

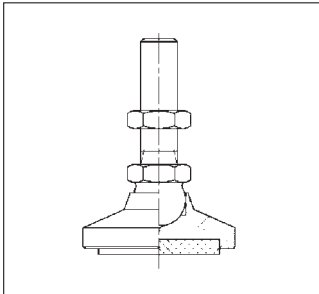
MP 90/04 Cable junction box

- Temperature range: -20°C ... +70°C
- Material: ABS
- Protection class: IP65

MP 90/06 Cable junction box

- Temperature range: -30°C ... +70°C
- Material: PC
- Protection class: IP67

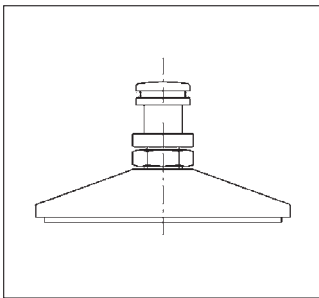
MP 80/31	Meteor installation cable 30 m	9408 800 80311
MP 80/51	Meteor installation cable 50 m	9408 800 80511
MP 80/12	Meteor installation cable 100 m	9408 800 80121
MP 80/32	Meteor installation cable 300 m	9408 800 80321
MP 80/80	Grounding cable	9408 800 80801
MP 90/04	Cable junction box for up to 4 load cells	9408 800 90041
MP 90/06	Cable junction box for up to 4 load cells (6-wire)	9408 800 90061



Platform foot for MP 58 and MP 79

- Mounting solution for weighing platforms
- Height adjustable
 - N-version: 4 mm;
 - S-version: 6 mm
- Temperature range: -20°C ... +65°C
- S-versions suitable for food industry
- Material:
 - N-version: mild steel, chromated
 - S-version: stainless steel 1.4301

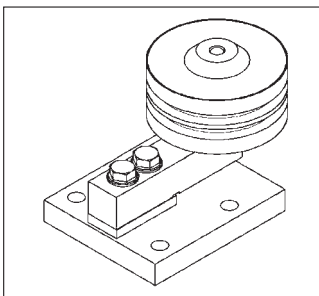
MP 91/00N	Platform foot for MP 58 and MP 79 until 2,268 kg (M12)	9408 800 91001
MP 91/00S	Platform foot for MP 58 and MP 79 until 2,268 kg, stainless steel (M12)	9408 800 91002
MP 91/01N	Platform foot for MP 79/5,099kg (M20)	9408 800 91011
MP 91/01S	Platform foot for MP 79/5,099kg, stainless steel (M20)	9408 800 91012



Platform foot for MP 58T and MP 79T

- Mounting solution for weighing platforms
- Height adjustable 6 mm
- Temperature range: -20°C ... +65°C
- S-versions suitable for food industry
- Material: stainless steel 1.4301

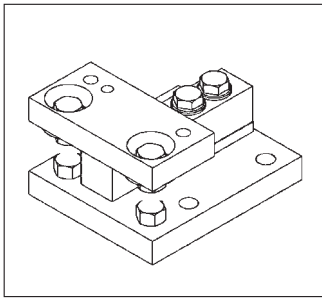
MP 91/10S	Platform foot for MP 58T and MP 79T until 2,268 kg, stainless steel	9408 800 91102
MP 91/11S	Platform foot for MP 79T/5,099kg, stainless steel	9408 800 91112



MP 92 – Rubber Mounting Kit

- Simple mounting solution for tanks and hoppers
- Temperature range: -20°C ... +65°C
- Material: mild steel, chromated
- Permissible horizontal displacement: 2.5 mm

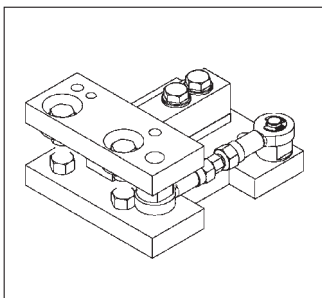
MP 92/00N	Mounting Kit with rubber element for MP 58 and MP 79 until 2,268 kg (M12)	9408 800 92001
MP 92/01N	Mounting Kit with rubber element for MP 79/5,099kg	9408 800 92011



MP 93 – Mounting Kit

- Simple mounting solution for tanks and hoppers
- Dummy function
 - MP 93/x0: 12 KN
 - MP 93/x1: 20 KN
- lift-off protection
 - MP 93/x0: 30 KN
 - MP 93/x1: 40 KN
- Material: stainless steel 1.4301

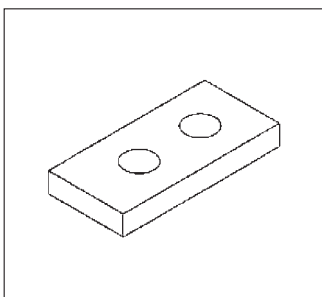
MP 93/00S	Mounting kit for MP 58 and MP 79 until 2,268 kg, stainless steel	9408 800 93002
MP 93/01S	Mounting kit for MP 79/5,099kg, stainless steel	9408 800 93012
MP 93/10S	Mounting kit for MP 58T and MP 79T until 2,268 kg, stainless steel	9408 800 93102
MP 93/11S	Mounting kit for MP 79T/5,099kg, stainless steel	9408 800 93112



MP 94 – Mounting Kit

- Simple mounting solution for tanks and hoppers with integrated constrictor with jack-up device (dummy function) and integrated lift-off protection
- Temperature range: -30 ... +80°C
- Dummy function
 - MP 94/10: 12 KN
 - MP 94/11: 20 KN
- lift-off protection
 - MP 94/10: 30 KN
 - MP 94/11: 40 KN
- Integrated Constrictor
 - MP 94/10: 5 KN
 - MP 94/11: 20 KN
- Material
 - N-version: mild steel, chromated
 - S-version: stainless steel 1.4301

MP 94/10N	Mounting kit with constrictor for MP 58T and MP79T until 2,268 kg	9408 800 94101
MP 94/10S	Mounting kit with constrictor for MP 58T and MP 79T until 2,268 kg, stainless steel	9408 800 94102
MP 94/11N	Mounting kit with constrictor for MP 79T/5,099kg	9408 800 94111
MP 94/11S	Mounting kit with constrictor for MP 79T/5,099kg, stainless steel	9408 800 94112



MP 98 – Spacer

- Spacer for MP 58(T) and MP 79(T)
- Material: 1.4021

MP 98/00N	Spacer for MP 58(T) and MP 79(T) until 2,268 kg	9408 800 98001
MP 98/01N	Spacer for MP 79(T)/5,099kg	9408 800 98011