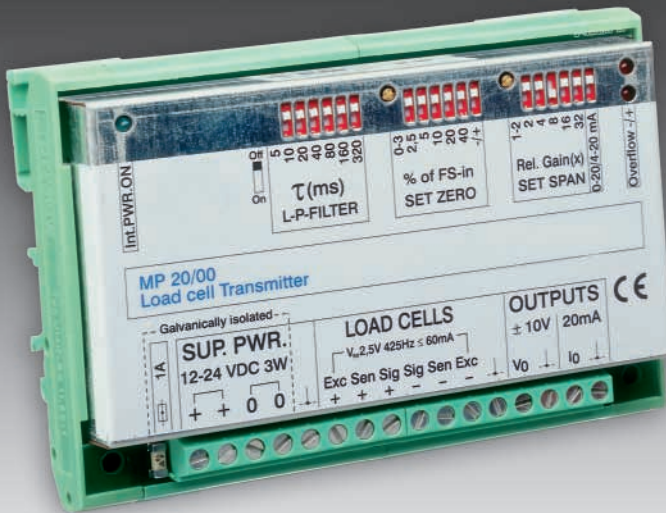




MP 20

Analogue Load Cell Transmitter



- Linearity better than 0.01% of full scale
- Analogue outputs 0/4 to 20mA and 0 to 10V_{DC} simultaneously usable
- Four load cells of 350Ω can be powered
- Active low pass filter from 0.25Hz to 32Hz
- Supply voltage 12- 24V_{DC} or 110V_{AC}/230V_{AC} via MP 20/20
- Zero offset up to +/- 80% of full scale
- Input signal range up to 3.3mV/V
- Easy calibration
- Easy mounting by using Phoenix DIN rail module

Protection class

Housing: IP 40 (DIN 40050)

Power supply

12 - 24V_{DC} +10/-15%

Power consumption:

3W max.

Mounting

Snap on DIN-rail mountable by Phoenix UMK modul

Load cell input

Max. four 350Ω load cells
Excitation voltage: 2,5V_{AC} 425Hz
Excitation current: max. 60mA
Input gain range for F.S.:
0 - 0.17mV/V up to 0 - 3.3mV/V
Dead load compensation:
80% of max. input
Max. cable length: appr. 150m

Analogue output

Voltage output (Vout):
+/- 10V_{DC} at min 500Ω
Current loop output (Iout):
0/4-20mA at max. 500Ω
Deviation between Vout and Iout:
3% of F.S.

Accuracy

Linearity: < 0.005% F.S at 23°C
Temperature effect on zero: < 0.003%/K
Temperature effect on span: < 0.0015% K
Max. deviation 0-F.S.: < 50ppm
Signal filter:
active low pass filter in 64 steps
from 0.25-32Hz
Drift 5min. upon power on:
< 20ppm of F.S.

Environmental conditions

Temperature range: -10 to +40°C
Dimensions in mm:
113 x 77 x 37 (W x D x H)
Weight: appr. 0.2kg
Warm up time: 30 minutes

Optional dual setpoint unit MP 20/10

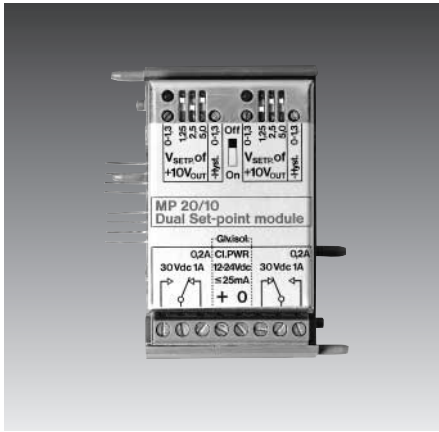
Two FORM-C reed relays
Up to eight setpoints can be arranged with four units
Relay coil voltage: 12-24V_{DC}
Relay coil current: < 25mA

Optional power supply unit MP 20/20

110/230V_{AC}

Optional load cell junction unit MP 20/30

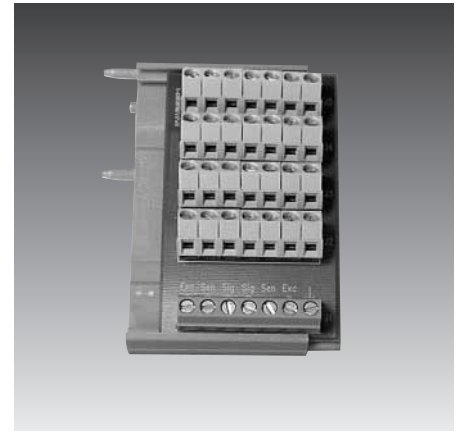
up to four 350Ω load cells connectable



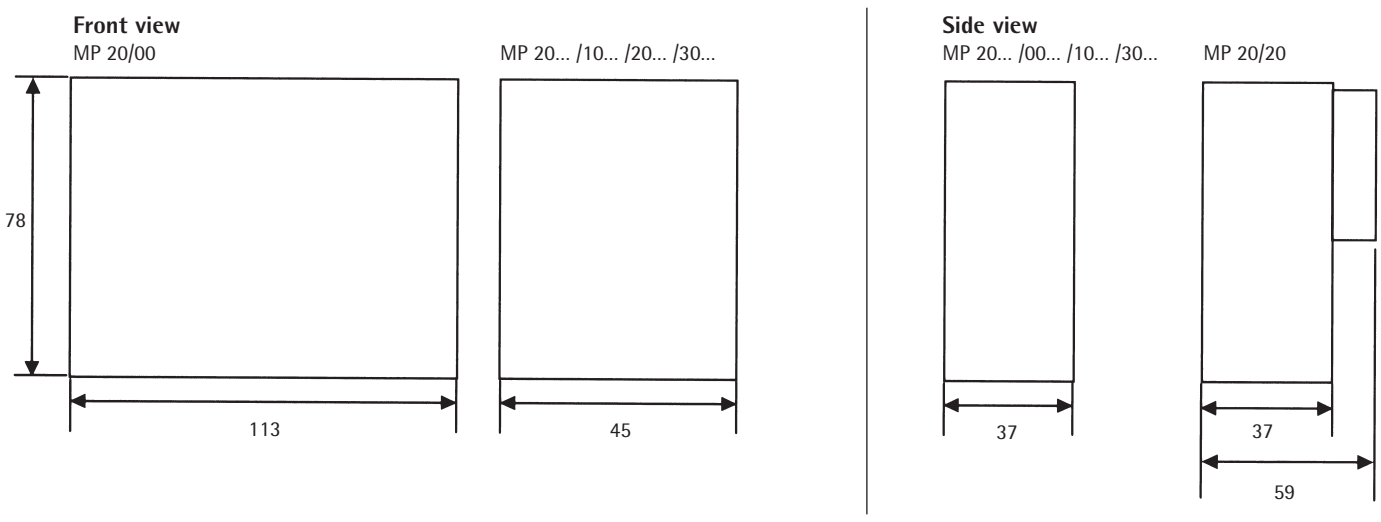
MP 20/10 dual setpoint unit



MP 20/20 110/230V_{ac} power supply



MP 20/30 four LC junction unit



Dimensions in mm

Order information

Type	Description	Order number
MP20/00	analogue load cell transmitter	9408 800 20001
MP20/10	dual set point unit	9408 800 20101
MP20/20	110/230V _{ac} power supply unit	9408 800 20201
MP20/30	four LC connection unit	9408 800 20301

The technical data given here serve only as a product description and must not be interpreted as guaranteed characteristics in the legal sense.

Forhandling i Danmark
GLOBAL Weighing A/S
 Tel +45 4776 0430
www.global-weighing.dk

Sartorius Hamburg GmbH
 Meiendorfer Straße 205
 22145 Hamburg, Germany
 Tel. +49.40.67960.303
 Fax +49.40.67960.383
www.sartorius.com