

# Stainless Steel Square Beam Load Cell

## MP 79, MP 79T



**227 kg ... 5,099 kg**

- Full stainless steel construction
- Compatible with other sources
- Hermetically welded seal (IP68, IP69K)
- Matched output
- Approved according to OIML R60
- Ex version available

### Applications

- Platform scales
- Tank and hopper scales

Technical Data		C3MR	
Accuracy class (Combined error)		0.020	$E_{max}$
Maximum capacity	$E_{max}$	227   454   1,134   2,268   5,099	kg
Maximum usable load	$E_u$	200	% $E_{max}$
Destructive load	$E_d$	$\geq 300$	% $E_{max}$
Safe side load	$E_{lq}$	100	% $E_{max}$
Maximum number of LC intervals	$n_{LC}$	3,000	
Minimum LC verification interval $v_{min} = E_{max}   Y   Y$		11,500   11,000 ( $E_{max} = 5,099$ kg)	
Rated output	$C_n$	2.0	mV/V
Tolerance on rated output	$D_c$	$< \pm 0.1$	% $C_n$
Zero output signal	$S_{min}$	$< \pm 5.0$	% $C_n$
Creep. during 30 min.	$d_{cr}$	$< \pm 0.0166$	% $C_n$
Temperature effect on $S_{min}$	$TK_{S_{min}}$	$< \pm 0.0122   < \pm 0.0127$ ( $E_{max} = 5,099$ kg)	% $C_n / 10$ K
Temperature effect on C	$TK_C$	$< \pm 0.010$	% $C_n / 10$ K
Input impedance	$R_{LC}$	$1,100 \pm 50$	$\Omega$
Output impedance	$R_o$	$1,000 \pm 2$	$\Omega$
Insulation impedance (100 V DC)	$R_{is}$	$\geq 5,000$	M $\Omega$
Recommended supply voltage	$B_u$	5 ... 15	V
Nominal ambient temperature range	$B_T$	-10 ... +40	$^{\circ}C$
Usable ambient temperature range	$B_{Tu}$	-40 ... +80	$^{\circ}C$

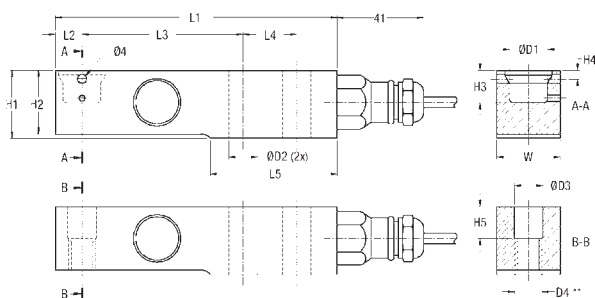
## Technical Data

## C3MR

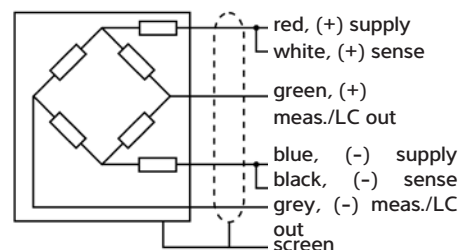
Nominal deflection	$S_{nom}$	0.21 ( $E_{max} = 227 \text{ kg}$ ); 0.24 ( $E_{max} = 454 \text{ kg}$ ); 0.32 ( $E_{max} = 1,134 \text{ kg}$ ); 0.47 ( $E_{max} = 2,268 \text{ kg}$ ); 0.52 ( $E_{max} = 5,099 \text{ kg}$ )	mm
Cable length		5.0	
Cable type		6 conductor TPE cable (AWG 26) shield grounded	
Sensor material		Stainless Steel 17-4PH (1.4548)	

Protection class (acc. to IEC 529 resp. DIN 40050) IP68, IP69K

The technical data given here serve only as a product description and must not be interpreted as guaranteed characteristics in legal sense.



Capacity	L1	L2	L3	L4	L5	H1	H2	H3	H4	H5	W	D1	D2	D3	D4
227 kg; 454 kg	133.4	12.7	76.2	25.4	60	31.0	28.8	15.0	4.0	15.0	30.0	18.0	13.0	13.5	M12
1,134 kg; 2,268 kg	133.4	12.7	76.2	25.4	60	31.0	30.5	15.0	4.0	15.0	30.0	18.0	13.0	13.5	M12
5,099 kg	190.0	21.0	105	40.0	93.0	49.0	41.0	20.5	8.0	20.5	43.0	25.0	21.0	21.5	M20



## Dimensions in mm

## Wiring diagram

## Order information

Type	Order number	Type	Order number
MP 79/227kgC3MR	9408 279 07120	MP 79T/227kgC3MR	9408 279 17120
MP 79/454kgC3MR	9408 279 07150	MP 79T/454kgC3MR	9408 279 17150
MP 79/1,134kgC3MR	9408 279 07210	MP 79T/1,134kgC3MR	9408 279 17210
MP 79/2,268kgC3MR	9408 279 07220	MP 79T/2,268kgC3MR	9408 279 17220
MP 79/227kgC3MRE	9408 679 07120	MP 79T/5,099kgC3MR	9408 279 17250
MP 79/454kgC3MRE	9408 679 07150	MP 79T/227kgC3MRE	9408 679 17120
MP 79/1,134kgC3MRE	9408 679 07210	MP 79T/454kgC3MRE	9408 679 17150
MP 79/2,268kgC3MRE	9408 679 07220	MP 79T/1,134kgC3MRE	9408 679 17210
		MP 79T/2,268kgC3MRE	9408 679 17220
		MP 79T/5,099kgC3MRE	9408 679 17250

## Certificate of conformity

### MP 79(T) (optional)

Ex-Zone 2, 22  
II 3G Ex nA II T6  
II 3D Ex tD A22 IP65 T85°C

### MP 79(T)/.E

Ex-Zone 0, 1, 20, 21  
II 1G Ex ia IIC T6|T5 Ga  
II 1D Ex ia IIIC IP67 T100°C  
Da



## Accessories

### MP 80 | MP 90 – Cables and cable junction

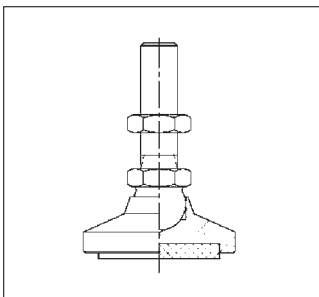
#### MP 80 Installation cable

- Temperature range: -40°C ... +90°C
- Material: TPE
- 6-wire cable

#### MP 90/04 Cable junction box

- Temperature range: -20°C ... +70°C
- Material: ABS
- Protection class: IP65

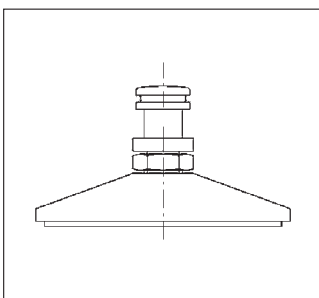
MP 80/31	Meteor installation cable 30 m	9408 800 80311
MP 80/51	Meteor installation cable 50 m	9408 800 80511
MP 80/12	Meteor installation cable 100 m	9408 800 80121
MP 80/32	Meteor installation cable 300 m	9408 800 80321
MP 80/80	Grounding cable	9408 800 80801
MP 90/04	Cable junction box for up to 4 load cells	9408 800 90041



### Platform foot for MP 58 and MP 79

- Mounting solution for weighing platforms
- Height adjustable
  - 6 mm
- Temperature range: -20°C ... +65°C
- S-versions suitable for food industry
- Material:
  - stainless steel 1.4301

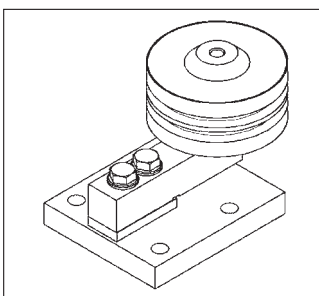
PR91/00 S	Platform foot for MP 58 and MP 79 up to 2,268 kg (M12)	9405 300 91002
-----------	--	----------------



### Platform foot for MP 58T and MP 79T

- Mounting solution for weighing platforms
- Height adjustable 6 mm
- Temperature range: -20°C ... +65°C
- S-versions suitable for food industry
- Material: stainless steel 1.4301

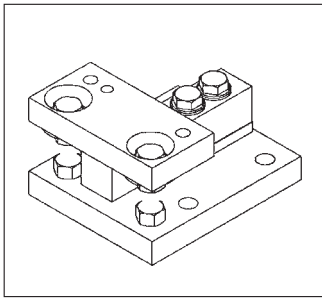
PR95T/00 S	Platform foot for MP 58T and MP 79T up to 2,268 kg, stainless steel	9405 300 91004
PR 91T/01S	Platform foot for MP 79T/5,099kg, stainless steel	9405 300 91014



### PR 92 - Rubber Mounting Kit

- Simple mounting solution for tanks and hoppers
- Temperature range: -20°C ... +65°C
- Material: mild steel, chromated
- Permissible horizontal displacement: 2.5 mm

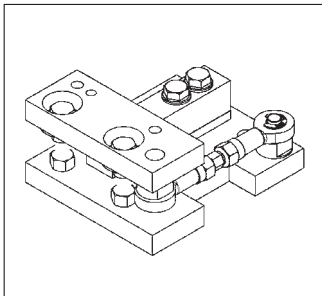
PR92/00 N	Mounting Kit with rubber element for MP 58 and MP 79 up to 2,268 kg (M12)	9405 300 92001
-----------	---	----------------



### MP 95T - Mounting Kit (without constrainer)

- Simple mounting solution for tanks and hoppers
- Dummy function
  - PR 95T/00 S: 1t
  - PR 95T/01 S: 2t
- lift-off protection
  - PR95T/00 S: 30 KN
  - PR95T/01 S: 40 KN
- Material: stainless steel 1.4301

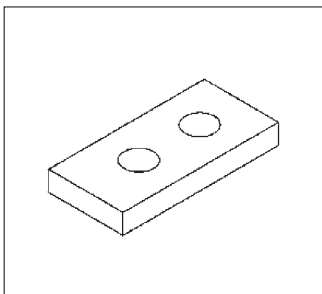
PR 95T/00 S	Mounting kit for MP 58T and MP 79T up to 2,268 kg, stainless steel	9405 300 95004
PR 95T/01 S	Mounting kit for MP 79T/5,099kg, stainless steel	9405 300 95014



### MP 95T - Mounting Kit (with constrainer)

- Simple mounting solution for tanks and hoppers with integrated constrainer with jack-up device (dummy function) and integrated lift-off protection
- Temperature range: -30 ... +80°C
- Dummy function
  - PR 95T/10 S: 1t
  - PR 95T/11 S: 2t
- lift-off protection
  - PR 95T/10 S: 30 KN
  - PR 95T/11 S: 40 KN
- Integrated Constrainer
  - PR 95T/10 S: 5 KN
  - PR 95T//11 S: 20 KN
- Material
  - stainless steel 1.4301

PR 95T/10S	Mounting kit with constrainer for MP 58T and MP 79T up to 2,268 kg, stainless steel	9405 300 95104
PR 95T/11 S	Mountingkit with constrainerfor MP 79T/5,099kgstainless steel	9405 300 95114



### MP 98 - Spacer

- Spacer for MP 58(T) and MP 79(T)
- Material: 1.4021

PR 98/00 S	Spacer for MP 58(T) and MP 79(T) up to 2,268 kg	9405 300 98002
PR 98/01S	Spacer for MP 79T/5,099kg	9405 300 98012