



ADAM HIGHEND

Transmitter for static
and dynamic measurement

Application

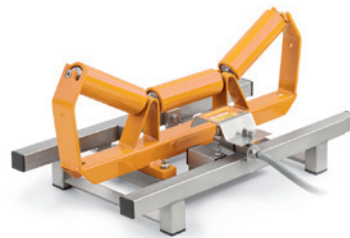
The ADAM HighEnd is a development from REMBE® Kersting which is arranged for two measurements. The transmitter is applicable to static and dynamic measurement. The application areas for ADAM HighEnd can be found in most diverse processes. Equally able to be combined are flow metering products and gravimetric measurement.

Operation

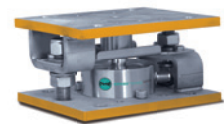
EVA HighEnd stores and delivers data, such as, for example, the current conveying capacity, or the total conveyed quantity, with the greatest accuracy. It offers adjustable inputs and outputs, counter contacts, as well as industry-standard interfaces RS232, Ethernet, USB, or optionally also Profibus DP, for a secure system integration using standard interfaces. The adjustment to the measurement is done using resources sparingly with reference weights and forgoes further calculations.

Technical data

Material Housing	1.4301 stainless steel
Wiring	Built-in switch cabinet without stainless steel housing
Conversion speed	full Wheatstone Bridge with passive connections (6 wire system)
Input	A/D 1,600 measurements/second
Output	three digital inputs
Operating voltage	four digital outputs
Interfaces	one analogue output optional
Permissible operating temperature	24/230 VDC
	RS232, USB, Ethernet
	Profibus DP optional
	-10 to +40 °C



UNIBAND®



TankLoad



MicroCell

Your Benefits

- **Cost-effective** evaluation unit.
- **Simple integration** into existing PLC systems: all communications interfaces are available.
- **High performance, freely programmable electronics:** commissioning from service technicians using remote assistance is possible.
- **Multiple applications.**
- **Cost-effective maintenance:** Data logger on USB stick, WLAN data transfer or GPRS remote servicing, requiring no on-site technicians.

Consulting. Engineering. Products. Service.